

Where is this service offered?

Le Chéile currently has Mentoring projects in Dublin North and South, Cork, Waterford and Clonmel. Our intention is to expand our service provision to other counties in Ireland over the coming years.

Service Development

Parent Mentoring

Le Chéile is establishing a Parent Mentoring service which will provide Mentoring to parents of young people involved with the Probation Service.

For more information contact

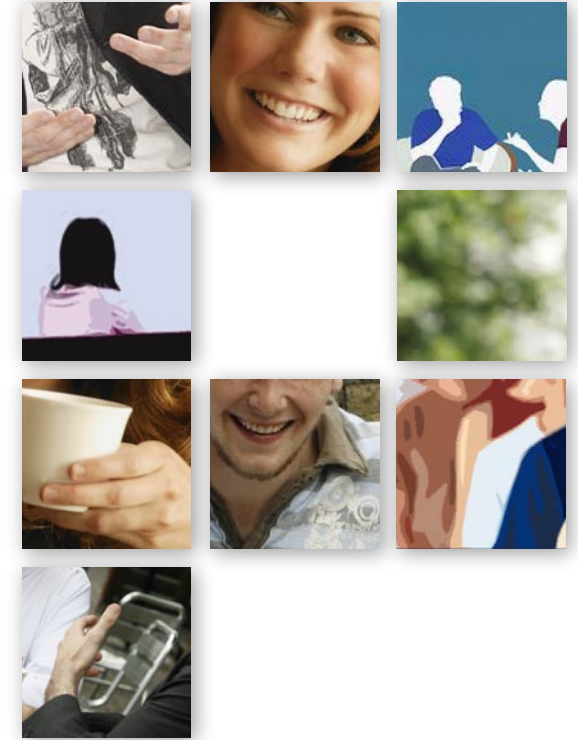
Le Chéile Mentoring Project

Head Office,
Ocean House,
Arran Quay,
Smithfield,
Dublin 7

Tel: 01 873 3053 | Fax: 01 873 3052
email: info@lecheile.ie | Web: www.lecheile.ie



Funded by



Le Chéile Mentoring project

In recognition of the changing needs of Young Persons Probation to provide a broader range of services to young people who come in contact with the Courts, Le Chéile was established in 2005 to meet the needs of the Mentor (Family Support) Order under the requirements of the Children Act 2001. This is a child-centred, non-judgmental service which recruits and trains volunteers from local communities to act as Mentors to young people referred by Young Person's Probation.

What is Mentoring?

A Mentor has come to mean a loyal, wise and trusted teacher and friend (Dondero 1997)

Mentoring can be 'naturally occurring' arising from the existing relationships in a young person's life. Sadly, not all children or young people are fortunate in this regard. In addition to Probation supervision, the complementary role of an assigned Mentor and the quality of that relationship, supports, guides and bring benefits from outside the family unit, to young people who are particularly at risk of offending behaviour. The Mentoring relationship helps combat the risk of further offending and offers positive alternatives to young people.

A "Mentee" under the Children Act 2001 is a child or young person aged between 12 to 18 years who has come before the Court. Mentees will be under the supervision of a Probation Officer.

Mentor (Family Support) Order

The Mentor Order under the Children Act 2001 makes provision for a Mentor Order to be implemented by the Probation Service. A Mentor

Le Chéile works to achieve a number of aims:

1. To provide a Mentoring Service to children and parents engaged with Young Person's Probation nationally

2. To provide a Mentoring Service which promotes positive change and aims to improve the decision making and overall well-being of our service users

3. To recruit and train teams of volunteer Mentors to act in the role of supportive adult, role model, advisor and friend

4. To ensure that every person who volunteers as a Mentor with Le Chéile is supported, valued and recognised in their role

5. To compliment the role of Young Person's Probation in addressing offending behaviour in line with legislative requirements under the Mentor (Family Support) Order

Order involves the Court assigning a Mentor to a child to help, advise and support the child and the child's family. (Section 131(1)).

The legislation underlines key elements relevant to the order i.e.:

- The child and the child's parent(s) or guardian(s) consent to the order and agree to co-operate with its terms.
- The child shall continue to reside at their normal residence.
- The order would not exceed two years duration.
- A Mentor must be available.
- The child would be under the supervision of a Probation Officer who would also support the Mentor in their role with the child and family.
- The order may specify other conditions necessary.

Provision is made under the Act to have the Mentor Order revoked or withdrawn on application to the Court.

Organisation Structure

Le Chéile is overseen by a Board of Management comprising members of Volunteering Ireland, Probation Service, North Side Partnership, Waterford Area Partnership and NIACRO.

The organisation is managed nationally by a National Project Manager and each local project and team of volunteer Mentors are managed by a Mentor Co-ordinator.

Le Chéile Mentoring Project is a Limited Company (Company No.: 424299)